



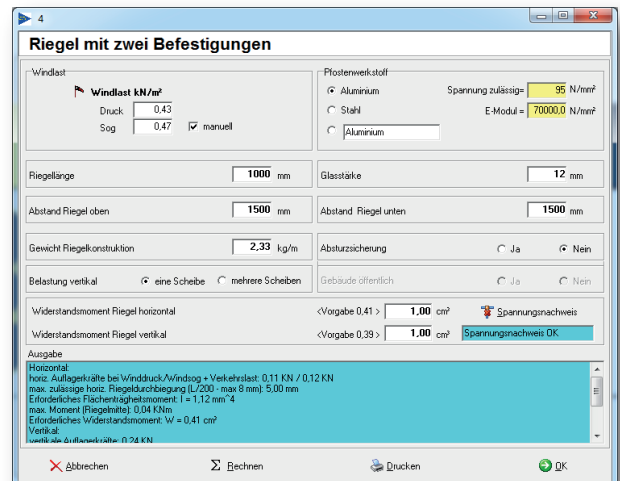
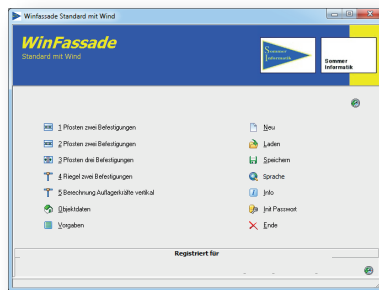
WinFassade

The professional software for facade construction

The structural analysis software WinFassade used to determine the required area moments of inertia and section modulus of mullion or transom profiles of facades.

The structural analysis software WinFassade created after entering all necessary boundary conditions the verifiable, static proof of facade profiles. Will be considered in the structural analysis software WinFassade loads from (glass, profiles), wind and traffic (Fall Protection).

In addition, the respective reaction forces as well as the maximum moment in the structural analysis software WinFassade be issued. With the support forces, the fasteners used (screws, brackets, anchors, etc.) are dimensioned and detected by a structural engineer.



Facade statics

- Issue the required moments of inertia and resistance
- Horizontal support forces in post
- Horizontal and vertical reaction forces for bolts
- Maximaler Momentenverlauf
- Maximum torque curve

➤ With the support reactions the fasteners used (screws, dowels, consoles) can be dimensioned and proved by a structural engineer

➤ DIN 1055 implemented

➤ In addition to the loads prescribed normative these can also be entered manually

➤ Easy to use, quick results

➤ Verifiable calculation with intermediate results

➤ Calculation according to specifications or free input of loads

➤ Detailed expression

➤ Reliable, validated and tested thousands of times calculation

➤ Recognized by inspecting structural

➤ Cost savings through optimized profile geometries

➤ Cost Effective Deals by rapid preliminary design

➤ Well-known references in Germany, Switzerland, Austria and worldwide



20152